

MB01 Basic hot foil stamping unit



- Attractive price
- 500 prints / minute
- Print area 15 x 30 mm
- Modular unit

The MB01 is a low cost, modular built, hot-stamper with an integral controller. It is designed specifically to combine a high quality print capability with user-friendly operation. State-of-the-art technology is applied to provide simple operating procedures with all the safeguards necessary to ensure uninterrupted operation and precise placement of print. The MB01 is able to do up to 500 prints per minute, depending on material and surface. A new cliché locking mechanism guarantees optimum operational safety and constant printing quality in all conditions. The hot stamping foil can be exchanged within seconds. A separate cassette previously fed with foil is not necessary. The MB01 hot stamper is a versatile equipment and can be used inline or off-line. It provides the user with the capability of reducing printing costs and increasing effectiveness of operation and the quality of print. The MB01 provides many features not normally found in low cost off-the-shelf hot stampers. See the structural features.

Structural features

- Modular design with integrated electronic controller
- Simple insertion of foil
- Exact foil advance setting
- Cliché locking system
- Electronic controller for constant print head temperature
- Electronic output (short-circuit-proof) for solenoid valve
- Electronic foil end warning

Options and accessories

- Mounting systems
- Printing types, numbering wheels and individual clichés
- Color foils - matching unit and material

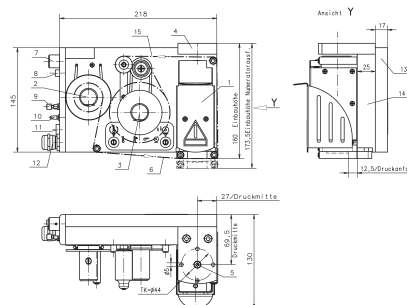
Unit type

- Design R - with printer head to the right

Technical Data

Dimensions:	218 x 130 x 160 mm, L x W x H
Print area:	15 x 30 mm
Capacity:	up to 500 prints / minute, depending on material and print area
Foil length:	max. 183 m, \varnothing 84 mm
Foil advance:	2 - 16 mm - infinitely variable
Printing pressure:	360 N at 6 bar
Type of drive:	pneumatic
Air supply:	min. 4 - max. 6 bar, \varnothing 6/4 mm
Electric control:	24 V AC \pm 10 %, 50 / 60 Hz, 90 VA
Safety classification:	I
Temperature:	343 - 473 K (70° - 200 °C) - infinitely variable
Dwell time:	approx. 5 - 520 ms - infinitely variable

subject to technical modifications



- 1 Printing cylinder
- 2 Take-off spool
- 3 Take-up spool
- 4 Holding bracket
- 5 M10 unit holder
- 6 Foil running
- 7 Advance adjustment
- 8 Pneumatic connection
- 9 Single timing pulse / reset
- 10 On / Off
- 11 Fuse holder
- 12 Electric connection
- 13 Cover
- 14 Basic plate
- 15 Hot stamping foil